

# NV AFN Disaster Coalition Workgroup Region 2 Nevada Recovery Resources

Updated September 9<sup>th</sup> , 2024

\*Resource availability is subject to change



# Prepare. Protect. Prevail.

Communication

Independence

Transportation



Maintaining  
Health

Support &  
Safety

Information, tips, and resources for  
Nevada's Disability Community  
impacted by Wildfire.

B  
A  
T  
T  
L  
E  
  
B  
O  
R  
N





# Davis Fire Information Resource Websites



Coordinating mitigation, preparedness, response, and recovery programs and resources through partnerships to build resilient communities for Nevada's residents and visitors.

Chief David W. Fogerson

## Davis Fire

Overview/Evacuation/Power Outages/Shelters/Guidance

- [Dem.nv.gov/Resources/Davis\\_Fire](https://dem.nv.gov/Resources/Davis_Fire)

## Evacuation Zones and Centers:

- [www.perimetermap.com](http://www.perimetermap.com)

# How do I find a shelter?

The American Red Cross offers sheltering and disaster case management assistance.

## Open shelters:

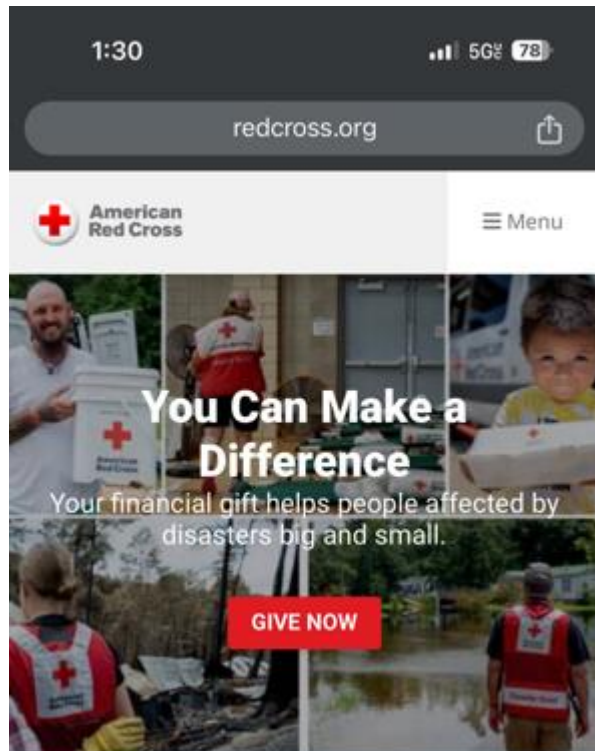
- **Washoe County Senior Center**, 1155 E. 9th Street, Reno, NV 89512. This center is for people and small pets.
- Check availability and status of shelters at [www.perimetermap.com](http://www.perimetermap.com)



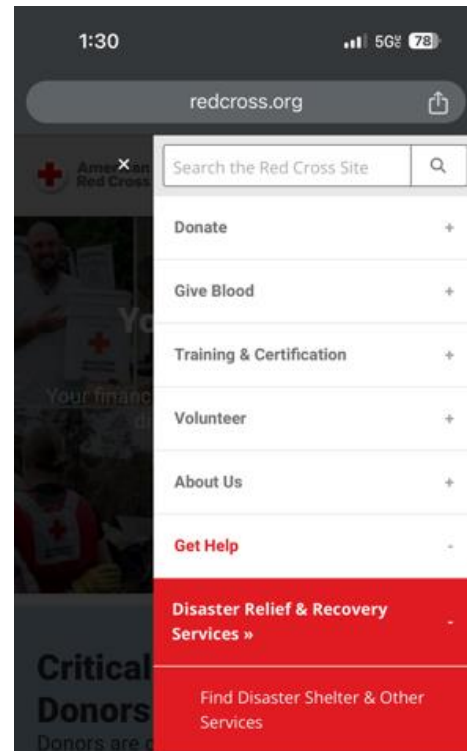
Find additional Red Cross shelters at:  
[Find Open Shelters page](#)

# Red Cross Find a Shelter Instructions

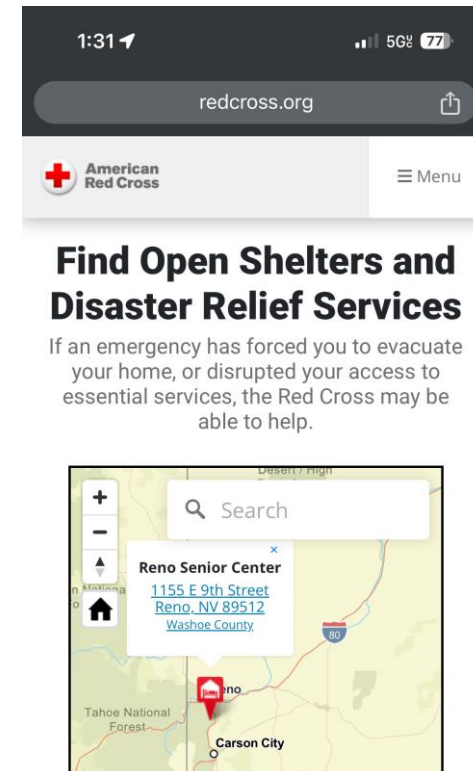
1. Use your mobile device to visit the [Find Open Shelters page](#). Click on the three grey lines next to “Menu” for drop down.



2. Click Disaster Relief & Recovery Services, and then Find a Disaster Shelter



3. Type in location you are trying to find location for. Look for Red Pins with a white home graphic on the map. Click on the pins to find the detailed shelter information.



# Animal Evacuation and Sheltering

## Large animal shelter remains open at:

- University of Nevada Reno Equine Facility
- Silver Saddle Ranch
- Fuji Park

## Knowledge Resource:

[Link: Wildfire smoke and animals](#)

[Link: Impact of the 2020 Wildfires on grazing livestock health and production](#)

## Potable water for livestock or residential uses are available through these companies:

H2O 4 U (775) 233-7949

Sani-hut (775) 358-6720

Site Services of Nevada (775) 444-1098

United Site Services (800) 864-5387







When you need help,  
Nevada 2-1-1 is here  
to assist. 24/7.

**Nevada 2-1-1 can connect you with information and access to:**

- Medical and mental health resources
- Employment support services
- Programs for children, youth and families
- Pregnancy services
- Food pantries
- Community crisis and disaster recovery
- Housing help
- Utility payment assistance
- Support for seniors and persons with disabilities
- Many more public services and resources

Call 2-1-1 Visit [Nevada211.org](http://Nevada211.org) Text your zip code to 898211



Cuando necesita ayuda,  
Nevada 2-1-1 está aquí  
para asistirle. Las 24  
horas del día, los 7 días  
de la semana.

**Nevada 2-1-1 puede conectarlo con información y acceso a:**

- Recursos de salud médicos y mentales
- Servicios de apoyo de empleo
- Programas para niños, jóvenes y familias
- Servicios durante el embarazo
- Alacenas de alimentos
- Ayuda para viviendas
- Crisis comunitaria y recuperación de desastres
- Asistencia con pagos de servicios
- Apoyo para personas mayores o personas con discapacidades
- Muchos otros servicios públicos y recursos

Llame al 2-1-1 Visite [Nevada211.org](http://Nevada211.org)  
Envíe su código postal por texto al 898211

# Search resources in Nevada with 2-1-1

You will reach a highly-trained information and referral specialist who will assess your needs and provide a list of referrals to available resources in your community.

Referrals are usually given over the phone or can be emailed or text to you. In crisis situations a warm transfer can be made directly to crisis specialists or 9-1-1. This includes categories such as free meals, shelter/housing, clothing, hygiene items, financial assistance, transportation, etc.

## 4 Ways to contact:

1. Call 2-1-1 by phone  
TTY for the deaf and hard of hearing and interpreter services are also available in 140+ languages
2. Text zip code to 898211
3. Chat online on the [211 Website](#)
4. Download the 211 APP

-[Google](#)  
-[Apple](#)

# Nevada Region 2 Access and Functional Needs Resources

## Statewide Disability Resources

- [AFN | Nevada Division of Emergency Management](#)
- [Nevada Governor's Council on Developmental Disabilities](#)
- [Nevada Disability Law Center](#)
- [Nevada Commission for Persons Who are Deaf and Hard of Hearing](#)
- [Nevada Aging and Disability Services Division](#)
- [Nevada Center for Excellence in Disabilities, the Family Navigation Network](#)
- [Living with Fire Program](#)

## Independent Living Centers

- [Northern Nevada Center for Independent Living](#)

## National Disability Partners

- [The Partnership for Inclusive Disasters](#)
- [World Institute on Disability](#)
- [Pacific ADA Center](#)

## Service Areas





# Translation/Communication Access Real-time Translation (CART)/American Sign Language Interpreter Services (State Vendor)

- [American Sign Language Communication \(99SWC-NV22-11700\)](#)
- [Avantpage \(99SWC-NV22-11697\)](#)
- [Captions Unlimited of Nevada, Inc \(99SWC-NV22-11676\)](#)
- [Diversidad LLC \(99SWC-NV22-11706\)](#)
- [eTranslation Services \(99SWC-NV22-11681\)](#)
- [Focus Language International \(99SWC-NV22-11678\)](#)
- [GLOBO Language Solutions LLC \(99SWC-NV22-15218\)](#)
- [Homeland Language Services\(99SWC-NV22-11691\)](#)
- [Language Line Services \(99SWC-NV22-11705\)](#)
- [Language Link \(99SWC-NV20-4360\)](#)
- [Languages Translation Services \(99SWC-NV22-11693\)](#)
- [Las Vegas Interpreters Connection, LLC \(99SWC-NV22-11698\)](#)
- [MiTio Inc \(99SWC-NV22-11682\)](#)
- [Powerling \(99SWC-NV22-11680\)](#)
- [Preston Bass Interpreting \(99SWC-NV22-11695\)](#)
- [Propio Language Services LLC \(99SWC-NV22-11689\)](#)
- [Sign Language USA, Inc \(99SWC-NV22-11688\)](#)
- [Transfactive Language Services LLC \(99SWC-NV22-11675\)](#)
- [United Language Group \(99SWC-NV22-11703\)](#)
- [Universal Language Service, Inc. \(99SWC-NV22-11686\)](#)
- [Volatia Language Network, Inc \(99SWC-NV22-11684\)](#)
- [WorldWide Interpreters, Inc. \(99SWC-NV22-11690\)](#)

# How do I replace my personal documents?

**Driver's License or Identification Card:** Contact your local **Department of Motor Vehicles** or other issuing authority. [Nevada DMV](#)

**Military Documents:** Contact the Department of Veteran Affairs at **1-800-827-1000** or TDD/TTY **1-800-829-4833**. [Information Page](#)

**Passport:** Visit the U.S. Department of State's [How to Apply page](#).

**Birth, Death, Marriage or Other Certificates:** Contact the Department of Health and Human Services Nevada Division of Public and Behavioral Health (DPBH) [Information Page](#)

**Credit or Debit Cards:** Contact your banking or credit institution.

**Citizenship Papers:** Contact the Bureau of Citizenship and Immigration Services at **1-800-375-5283**. [Information Page](#)

# Tips and Reminders for Homeowners working with Contractors



The [Nevada State Contractors Board](#) cautions homeowners to work only with registered contractors, and to obtain three bids for any repairs. Though a homeowner may be in a rush to repair fire damage, keep these tips in mind to [Hire Smart](#) and avoid shoddy work or bad contractors:

Check the contractor's license number by utilizing our [Online Contractor Search](#) or by contacting the Nevada State Contractors Board

Beware of red flags, including contractors who ask to be paid in cash, have a check made out to someone other than the business, or work only evenings or on weekends. Unregistered contractors or scam artists typically use these tactics.

Don't pay in full until the job is done.

Use the [Contract Checklist](#)



# Insurance Assistance

Contact your insurance company to report the **how, when and where** of the damage.

- Prepare a **list of damaged or lost items** and provide receipts if possible. You may want to take pictures or video of the damage for **additional claim documentation. Do not throw anything away** without discussing it with your claim adjuster.
- **Keep receipts** for expenses including lodging, repairs or other supplies.
- Verify your insurance adjuster in [licensed](#).
- [List of the claims hotline numbers for Nevada's ten largest home insurance carrier groups.](#)
- [Making repairs](#)

# Taking care of yourself is important

SAMHSA **The Disaster Distress Helpline (DDH)** is the first national hotline dedicated to providing disaster crisis counseling. This toll-free, multilingual, crisis support service is available 24/7 to all residents in the U.S. and its territories who are experiencing emotional distress related to natural or human-caused disasters.

Call or text [1-800-985-5990](tel:1-800-985-5990).

**Español:** Llama o envía un mensaje de texto [1-800-985-5990](tel:1-800-985-5990) presiona “2.”

**For Deaf and Hard of Hearing ASL Callers:** To connect directly to an agent in American Sign Language, click the "ASL Now" button below or call [1-800-985-5990](tel:1-800-985-5990) from your videophone. ASL Support is available 24/7. [FAQs for ASL NOW users](#).

**Suicide & Crisis Lifeline:** Text **988**

# NAMI NEVADA



**NAMI Northern Nevada** is an organization of families, friends and individuals whose lives have been affected by mental illness. Together, we advocate for better lives for those individuals who have a mental illness.

Link: [NAMI Northern Nevada](#)



# DEAFLEAD

DeafLEAD is an organization that aims to provide complete and ongoing support to Deaf, Hard of Hearing, Late-Deafened, and DeafBlind individuals and their families. They offer a trauma-informed approach to help people navigate through severe distress, disasters, or being a victim of a crime. The team of staff and volunteers provide emotional support and access to necessary resources that can help individuals thrive.

DeafLEAD offers 24/7 crisis intervention, advocacy, case management, interpreting, and mental health support services to victims of crime who are Deaf, hard of hearing, DeafBlind, and late-deafened individuals and their families. The staff are also experts in victim services, and they help organizations ensure that their services for crime victims with hearing loss are culturally and linguistically appropriate. For additional details regarding the services and resources provided, please visit the [DeafLEAD Website](#).

## **988 Suicide & Crisis**

Individuals struggling with suicide.

[Chat](#), Text, Call or [Videophone 988](#)

## **Deaf Crisis Line**

Individuals facing a variety of challenges and/or victims of crimes.

[Videophone 321-800-3323](#)

## **Disaster Distress Helpline**

Individuals experiencing distress or mental health challenges related to natural or human-caused disasters

[Videophone 1-800-985-5990](#)

# Wildfires: Pregnancy, Infant, and Children

## Knowledge Resources:

- [Link: Wildfires and Health Education Hub](#)
- [Link: Wildfires: What Parents Need to Know](#)

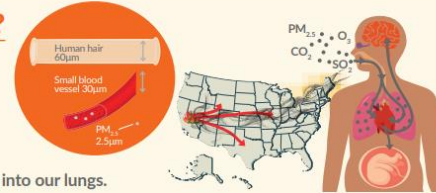
## WILDFIRES & Pregnancy

### What is wildfire smoke?

Wildfire smoke can travel thousands of miles and includes a mix of air pollutants like very small particles (PM<sub>2.5</sub>) and gases like carbon dioxide (CO<sub>2</sub>) and ozone (O<sub>3</sub>).

We breathe these small air pollutants into our lungs.

From there, they can enter our blood and harm other organs, including traveling to the placenta.



### How does wildfire smoke affect pregnancy?

Air pollution from wildfires and other sources can:

- 🔥 Increase risk for preterm birth and low birth weight
- 🔥 Increase risk for higher blood pressure (hypertension) during pregnancy
- 🔥 Increase risk for diabetes during pregnancy



### How can we stay safe?



Stay indoors and use an air purifier with a HEPA filter.



Reduce activities like smoking, vaping, vacuuming, or using gas stoves when indoors.



Avoid unnecessary outdoor activity, and wear a tight-fitting N95 mask if you are outside.



Check the Air Quality Index (AQI) at [www.AirNow.gov](http://www.AirNow.gov) before going outside.



Ask a medical provider about your personal health risks, and learn more by opening the camera on your phone and scanning the following QR code:



UNIVERSITY OF CALIFORNIA Center for Climate, Health and Equity  
Project supported by Health Care Without Harm's Emerging Physician Leader Award grant.

[Link to flyer](#)

[Link to Flyer](#)

## LOS INCENDIOS FORESTALES

UNIVERSITY OF CALIFORNIA  
Center for Climate, Health and Equity

## Y El Embarazo

### ¿Qué es el humo de los incendios forestales?

El humo de los incendios forestales contiene una mezcla de contaminantes atmosféricos como las PM<sub>2.5</sub> y el ozono. Se puede propagar por miles de kilómetros.



- Las PM<sub>2.5</sub> son partículas de 2.5 micras (30 veces más pequeñas que una hebra de pelo).
- Su tamaño le permite entrar fácilmente en los pulmones.
- La inflamación en los pulmones por estas partículas se puede propagar a la sangre y llegar a la placenta.

### ¿Qué puede hacer el humo durante el embarazo?

- 🔥 Aumentar el riesgo de parto prematuro y de bajo peso al nacer
- 🔥 Aumentar el riesgo de diabetes durante el embarazo
- 🔥 Aumentar el riesgo de presión arterial alta (hipertensión) durante el embarazo

#### ¿Quiere saber más?



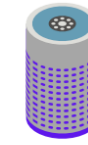
El centro de educación e incendios forestales de UC

LA EPA

### ¿Como podemos estar seguros?



Hable con su médico sobre sus problemas de salud.



Quedese dentro y utilice un purificador de aire con filtro HEPA.



Utilice una mascarilla bien ajustada (idealmente una N95).



Consulte el índice de calidad del aire (AQI) en [AirNow.gov](http://AirNow.gov) antes de ir afuera.

# Wildfires: Impact on People with Developmental Disabilities

## **Knowledge Resource:**

[Link: Impact of Forest Fire  
Air Quality on People with  
Developmental Disabilities](#)





# Watch out for scams

Fraudsters often take advantage of the chaos after a disaster, we urge you to verify licenses and check references before making agreements on selling your land, rebuilding your home, etc.

[Link: Nevada Bureau of Consumer Protection](#)

# Thank You

Kimberly Palma-Ortega,  
CHWI

[Kportega@dhhs.nv.gov](mailto:Kportega@dhhs.nv.gov)  
775-471-1492 – Cell

Heather Lafferty

[heatherlafferty@dem.nv.gov](mailto:heatherlafferty@dem.nv.gov)  
725-296-4128 – Cell

